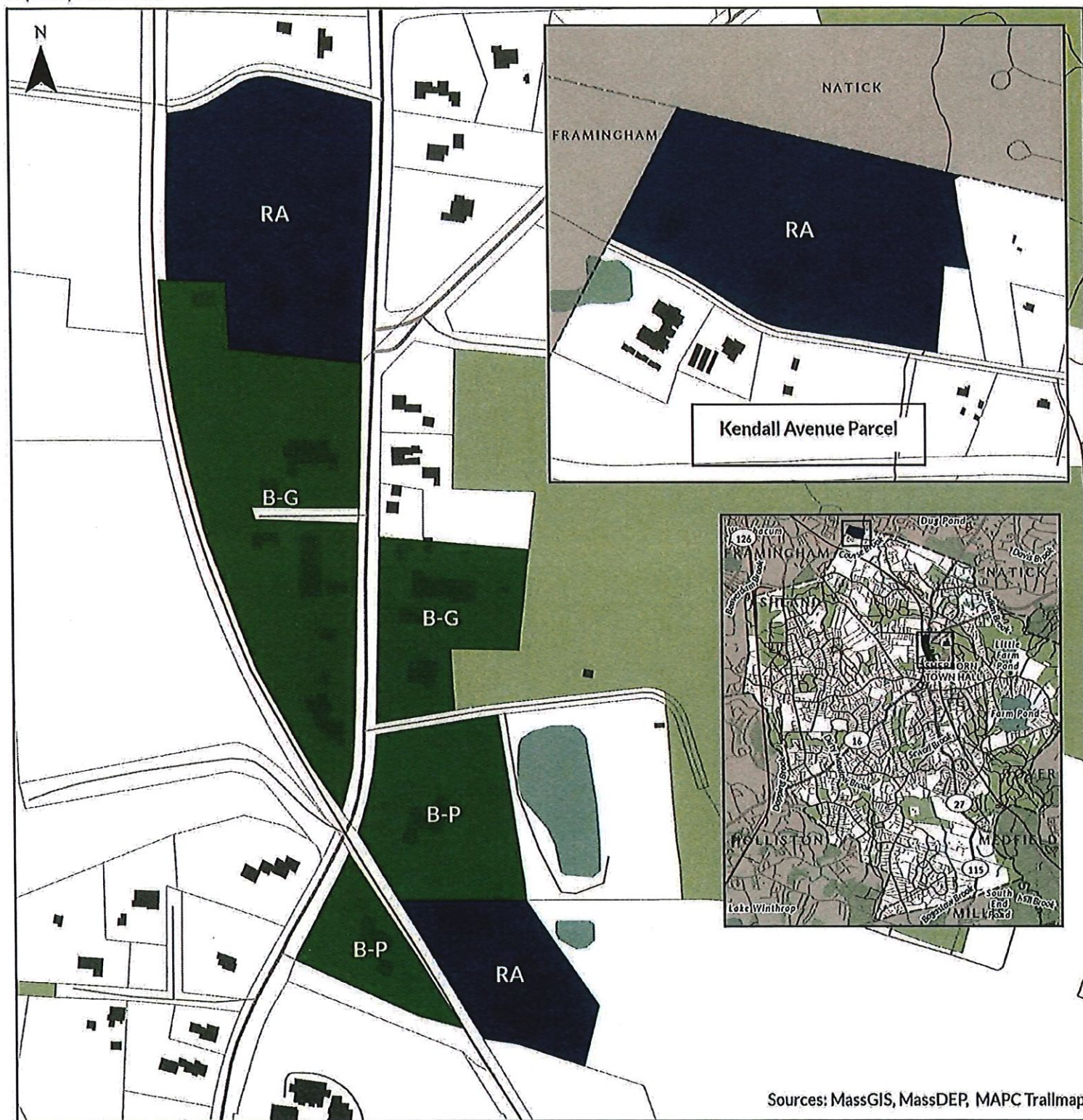


TOWN OF SHERBORN - PROPOSED MBTA ZONING DISTRICTS

Prepared by JM Goldson LLC

J M GOLDSON



Sources: MassGIS, MassDEP, MAPC Trailmap

- Schools
- Buildings
- Parcels
- Trails
- Water bodies
- Open space

MBTA 3A Overlay District Uses

- Mandatory Mixed-Use
- Multifamily

Base Zoning Districts

- B-G - Business - General
- B-P - Business - Professional
- R-A - Residence A

